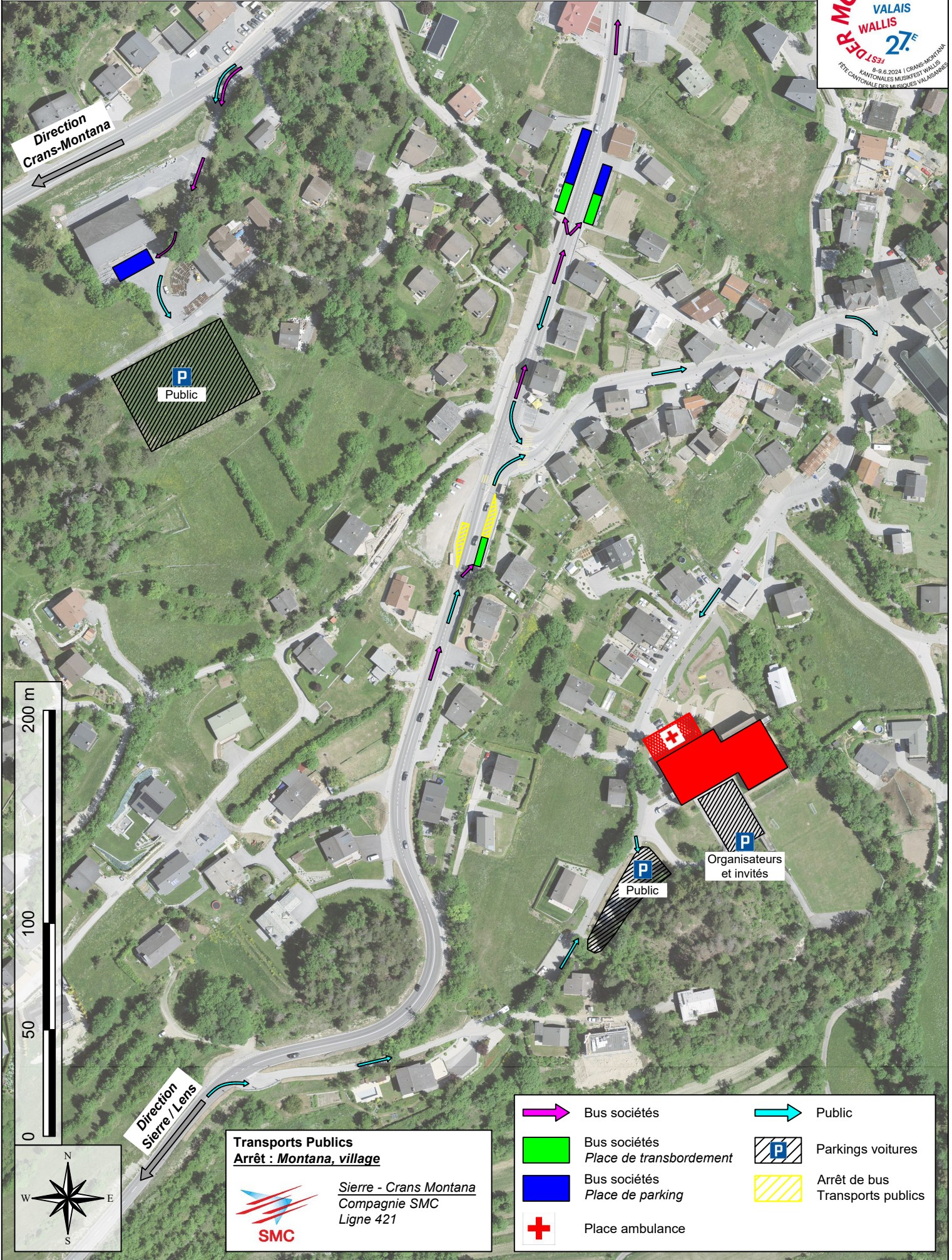
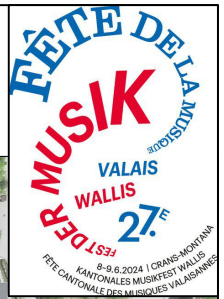


Fête Cantonale des Musiques 2024 - Région Crans-Montana
 Site de Montana-Village
 Accès pour les sociétés / public



Direction
Crans-Montana


Direction
Sierra / Lens

P
Public


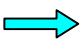





P
Organisateurs
et invités

P
Public

Transports Publics
Arrêt : Montana, village



Sierra - Crans Montana
 Compagnie SMC
 Ligne 421

- | | | | |
|---|---|---|------------------------------------|
|  | Bus sociétés |  | Public |
|  | Bus sociétés
Place de transbordement |  | Parkings voitures |
|  | Bus sociétés
Place de parking |  | Arrêt de bus
Transports publics |
|  | Place ambulance | | |